



# Exploring Medicaid Waiver Programs to Fund Transportation

May 22, 2023

Sheila Holbrook-White







# Contents

Metropolitan Transportation Services	2
Metro Mobility: An Introduction	4-5
Mobility Innovation: Agency Contract	6
Medicaid Long-Term Services & Supports: Home and Community-Based Services §1915(c) Waivers	7-8
Mobility Innovation: MTS Waiver Service	9-11
Waiver Transportation Funding Principles, Financial Calculations, and Implications	13- 14

# Metropolitan Council: Metropolitan Transportation Services (MTS)

## Contracted Services:



**Metro Mobility**  
Regional ADA-Complementary Paratransit



**Transit Link**  
General Public Dial-A-Ride Service



**Metro Vanpool**  
Regional Commute Solutions Program



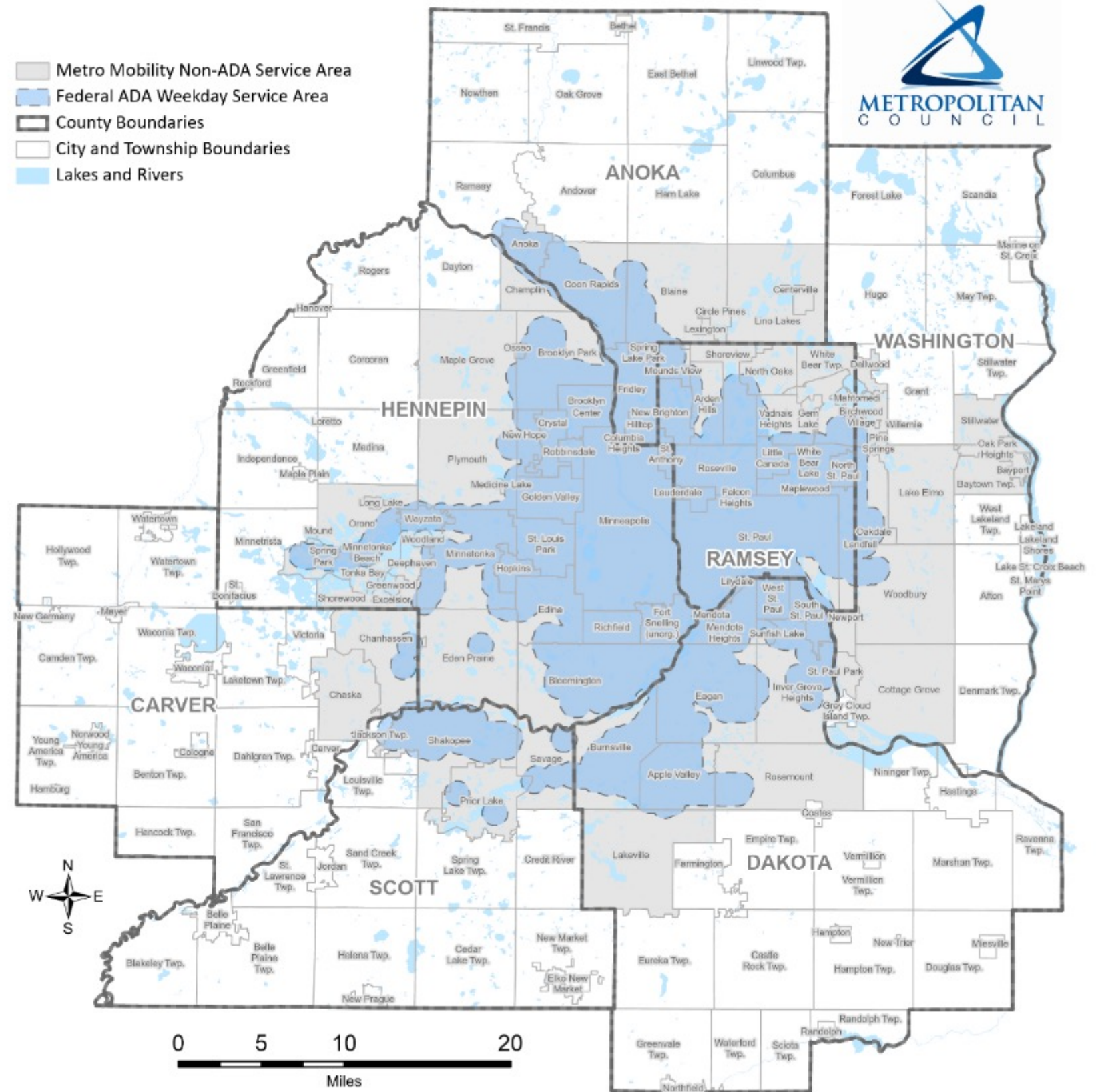
**Contracted Bus**  
Selected Fixed Route Services



**Metro Transit micro**  
Technology-enabled, on-demand pilot serving five square miles in North Minneapolis

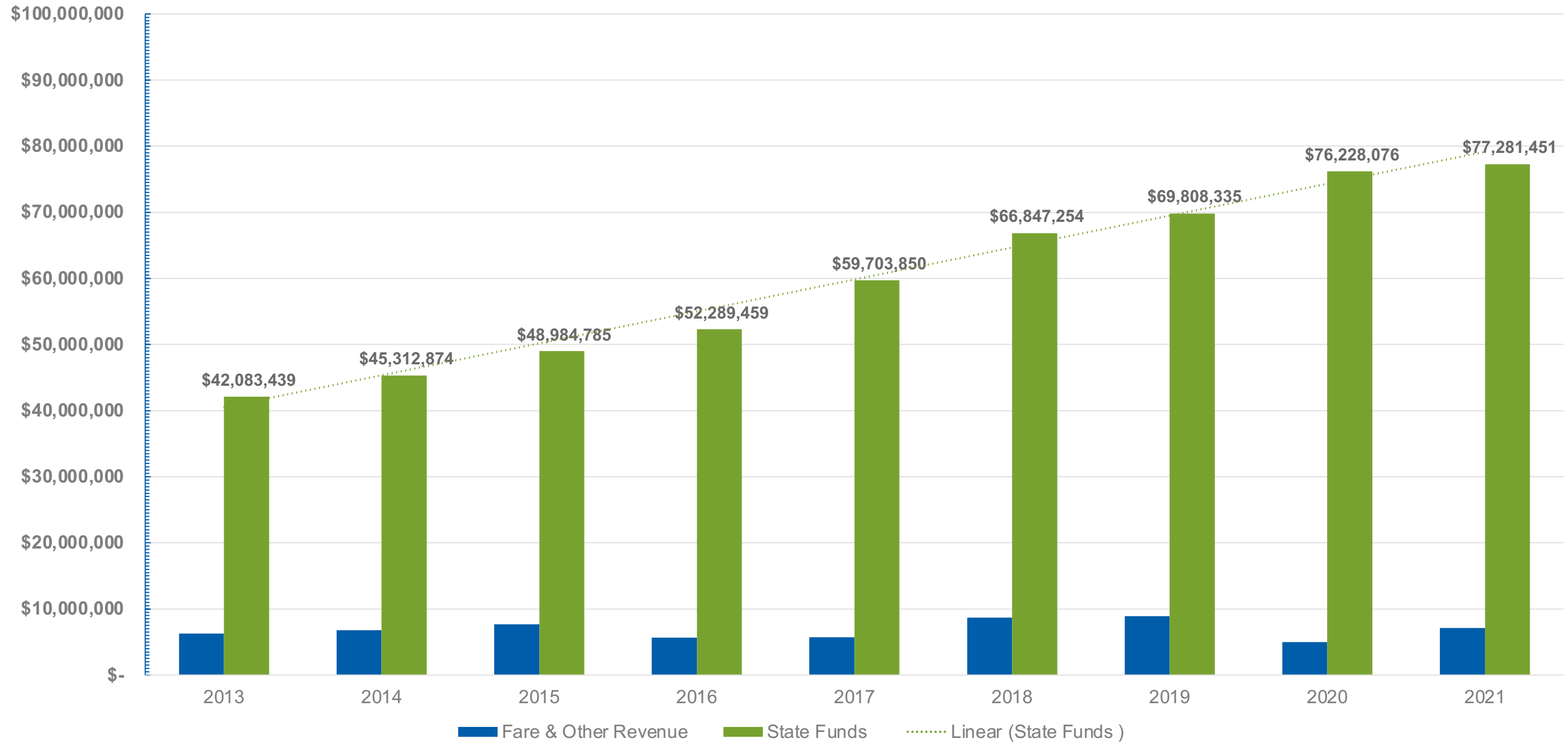


# Metro Mobility





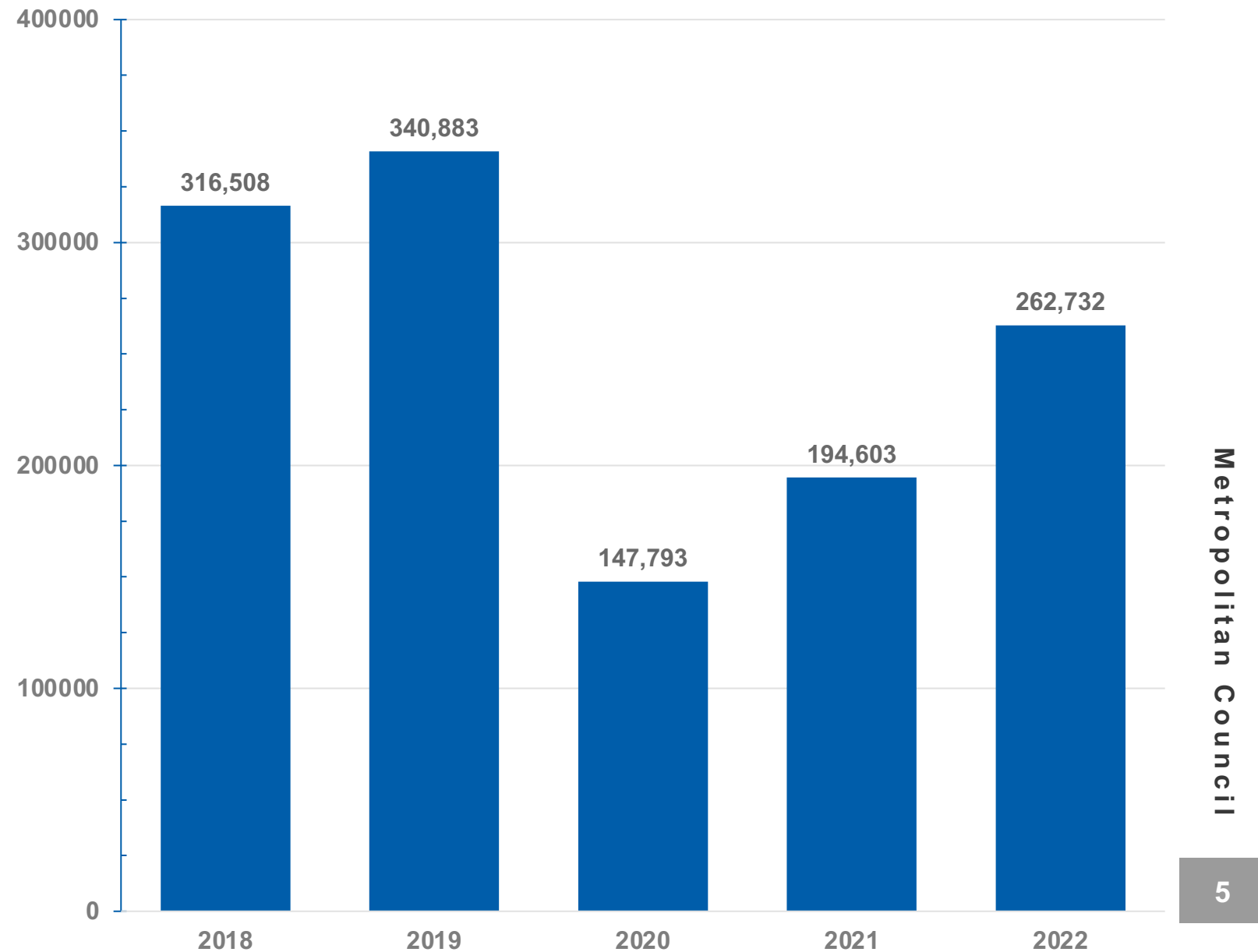
# Metro Mobility: Operating Expenses, 2013- 2022



# Mobility Innovation: Metro Mobility Agency Contract

- Weekday service to/from the 10 largest **Day Support Services** Programs
- All passengers are Metro Mobility certified
- All trips begin and end in the federal ADA service area
- All trips are standing orders
- Passengers are charged the posted fare per trip

Annual Agency Contract Trips, 2018- 2022



# Medicaid Long-Term Services & Supports: Home and Community-Based §1915 (c) Waivers



- Serves as a health insurance program for no- and low-income families and individuals
- Administered by states, in compliance with core federal requirements overseen by the Centers for Medicare & Medicaid Services (CMS)
- Cooperatively funded with states receiving federal matching funds
- States must provide certain mandatory benefits
- States may expand the array of benefits and populations:
  - Long-Term Services and Supports (LTSS)
  - Home and Community-Based Services (HCBS): §1915(c) Waivers:

# Medicaid Long-Term Services & Supports: HCBS §1915(c) Waivers By The Numbers



## Twin Cities Metro Region

**HCBS §1915(c) enrolled beneficiaries:** 31,962

**Approved HCBS §1915(c) waivers:** 5

**HCBS §1915(c) waiver services spending:** \$2,697,406,593

**Primary Fee-for-Service HCBS §1915(c) waiver targeted populations:**

- Developmental Disabilities (IDD)
- Community Access for Disability Inclusion
- Brain Injury

## Selected HCBS §1915(c) Waiver Services:

- Day Support Services
- Job exploration, development, and support for competitive, integrated employment
- Community destinations
- Independent living skills
- Transportation

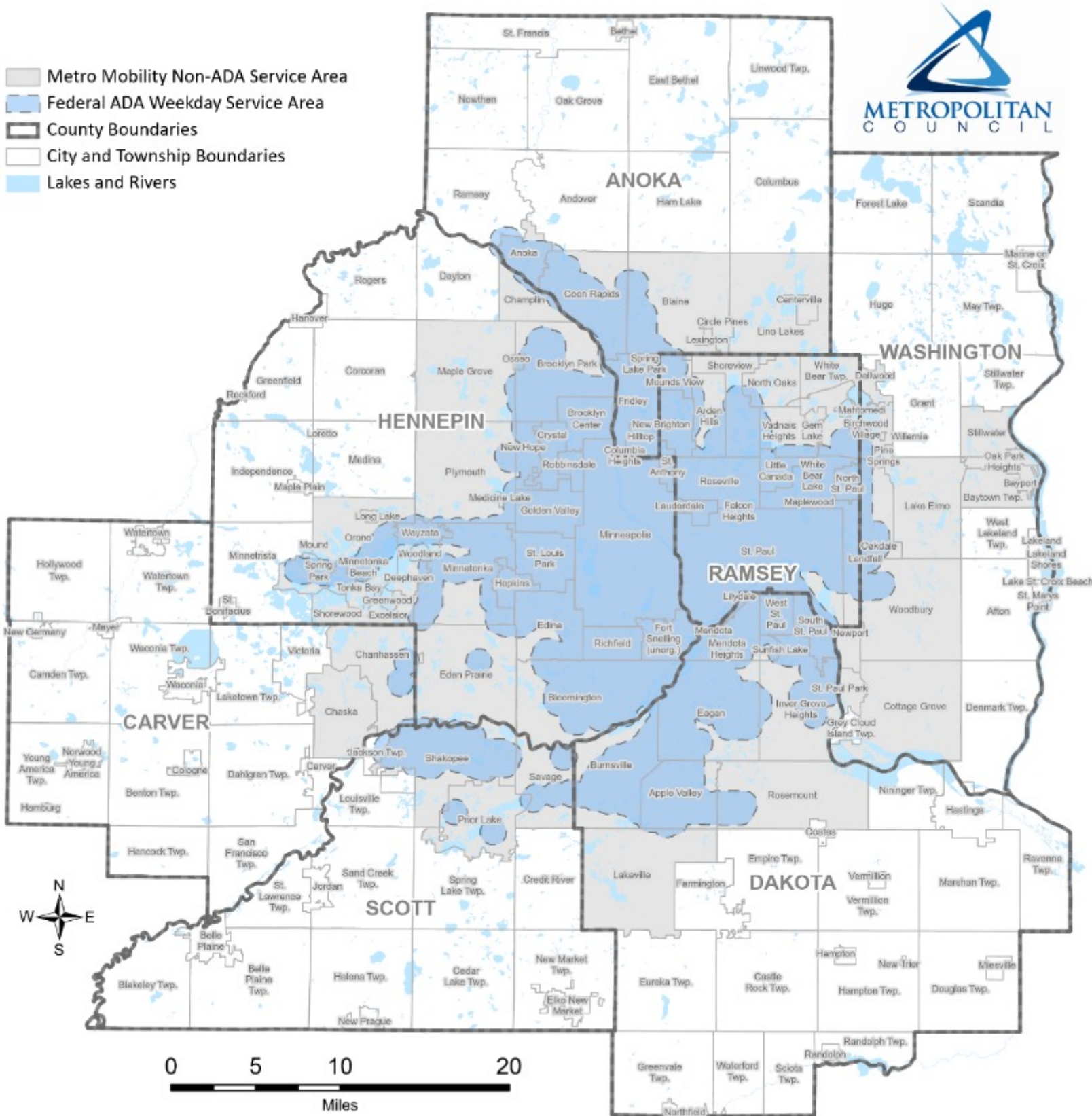


# Mobility Innovation: MTS Waiver Transportation Program



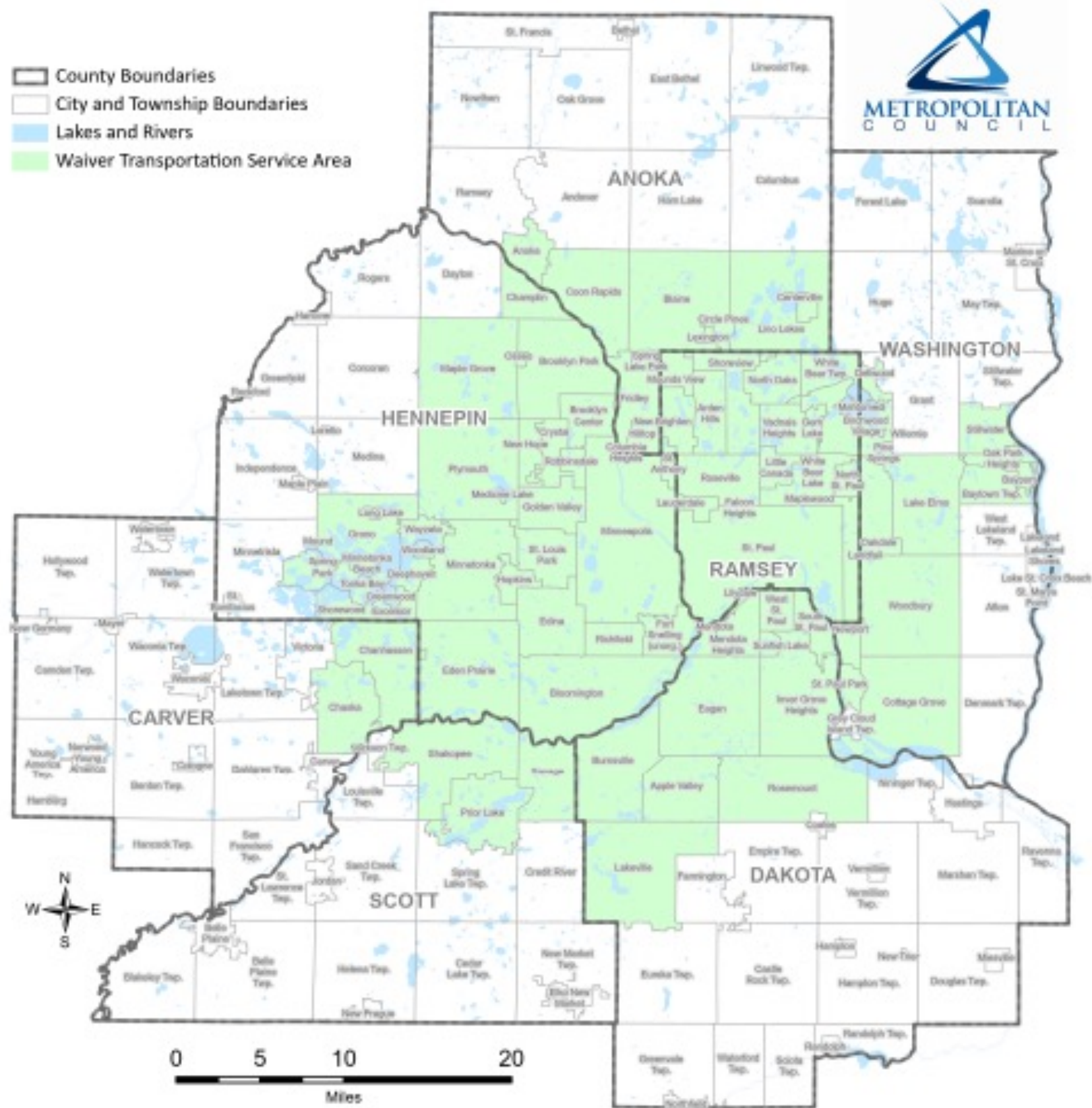
Elements	Metro Mobility	Waiver Transportation
Governing Structure	Americans with Disabilities Act, Title 2	Meets the state definition of Special Transportation Service; DHS requirements
Eligibility	Determined by Metro Mobility; Requires application, verification, and re-certification	Waiver participant with Lead Agency authorization
Purpose	No limits on destinations or trip purposes	Trips only to waiver-eligible destinations
Trip Parameters-Federal Area	Trips that begin/end in the federal area: No stand-by; Standing orders available	Trips that begin/end in the Transit Taxing District; No stand-by; Standing Orders available
Trip Parameters-State Area	Trips that begin and/or end in the state area may be placed on stand-by; Trips may not be provided; No Standing Orders.	Trips are available throughout the Transit Taxing District; No stand-by; Standing Orders are available
Service Days and Hours	Hours and days vary by community in alignment with all-day fixed-route service	Monday- Friday, 6 am to 10 p.m.; Saturday and Sunday, 8 am to 10 pm
Fares	Fare payments are required upon boarding	Paid through waiver; Fare-free boarding
Escort	Yes: First-Door through First-Door	Yes; First-Door through First-Door
Accessible Vehicles	Yes	Yes; Considering mixed-fleet options

# Metro Mobility Service Area





# Waiver Transportation Service Area



# Waiver Transportation Program: Financial Calculations

	STATE		FEDERAL		
Per-Ride Breakdown	State General Fund Contribution	Department of Human Services Share	Department of Human Services Federal Share	Council §5307 Federal Formula	Total
Current Services	\$20	\$2	\$2	\$4	\$28
Waiver Services	\$4	\$10	\$10	\$4	\$28



# Waiver Transportation Program: Implications







# Thank You

**Sheila Holbrook-White**

Waiver Transportation Program Manager  
Metropolitan Transportation Services

[Sheila.Holbrook-White@metc.state.mn.us](mailto:Sheila.Holbrook-White@metc.state.mn.us)

